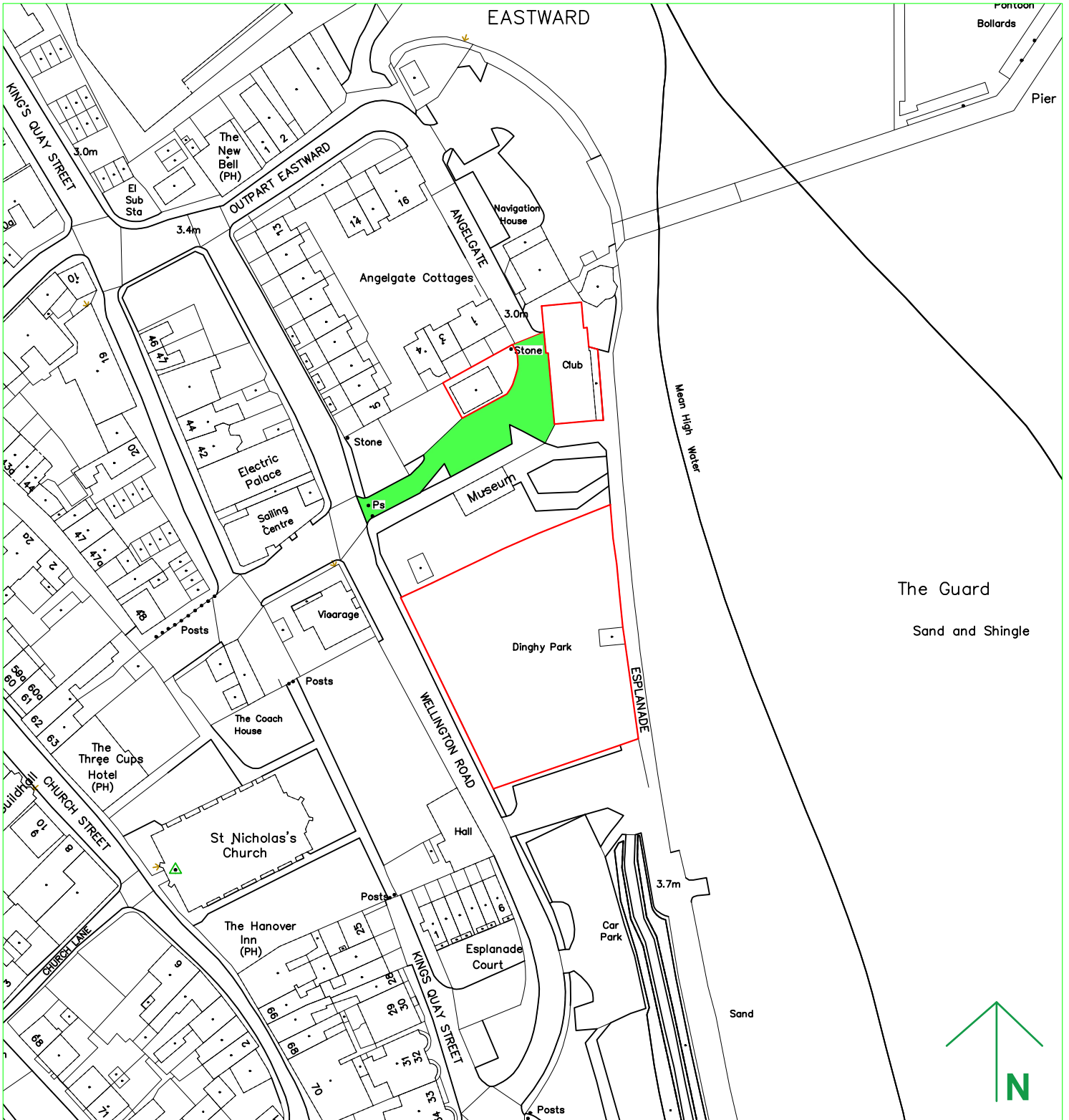


Reproduced from the Ordnance Survey Mapping with the permission of the controller of H.M. Stationery Office. Crown Copyright. Unauthorised reproduction infringes on Crown Copyright and may lead to Prosecution or Civil Proceedings
 TENDRING DISTRICT COUNCIL LICENCE No. 100186842005



TENDRING DISTRICT COUNCIL

M. KNAPPETT
 BA(hons). DMS.
 CORPORATE DIRECTOR
 CORPORATE SERVICES

Title
 Lease Plan, Harwich Town
 Sailing Club, Angel Gate,
 Harwich

Date: 30 September 2019

Scale: 1:1250

Drawn By: J. Wilkinson

Drawing No. & Revision
 1 A